



MONTHLY MEMBERSHIP PROGRESS REPORT

District 2 S4

Results as of: 5/31/2015

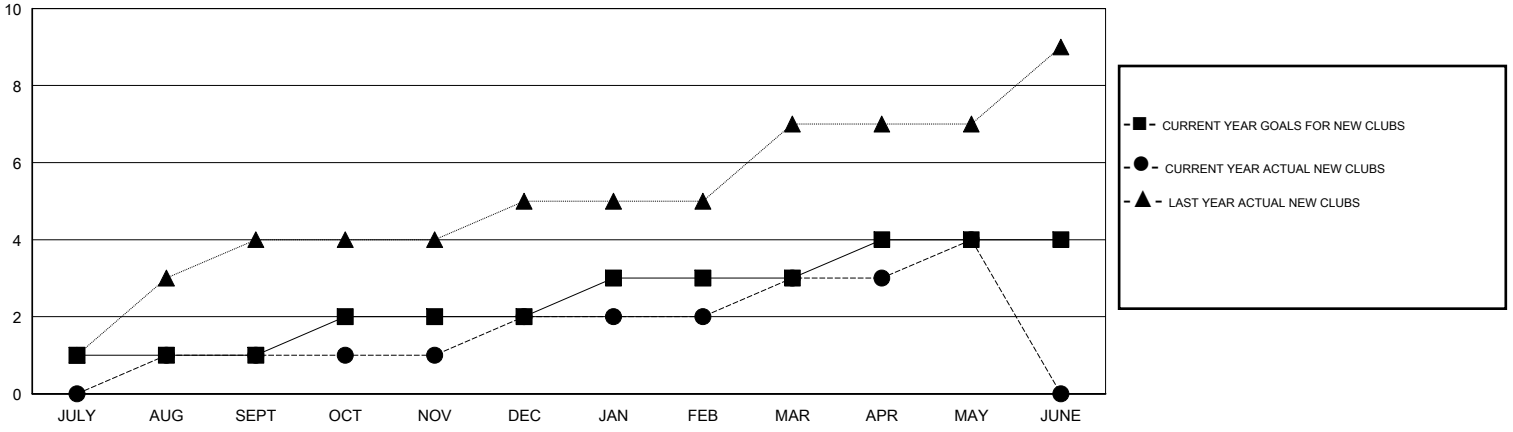
GMT: HAL GRIFFIN

LOCATION TEXAS

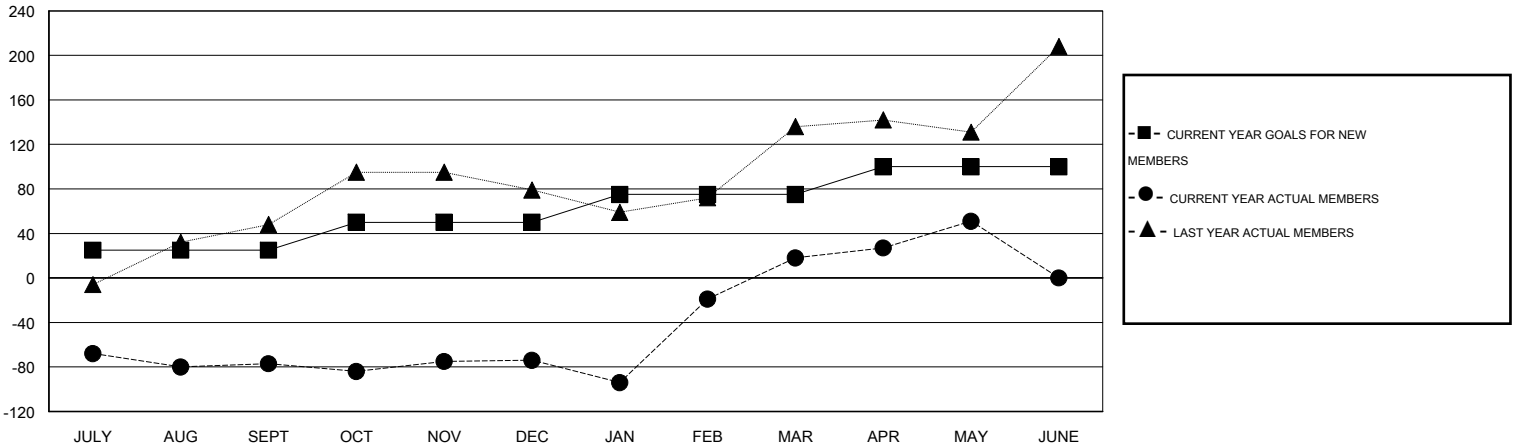
GMT CA 1

Clubs					Members				
RESULTS FOR 2014-2015					RESULTS FOR 2014-2015				
QUARTER	NEW CLUB GOAL	NEW CLUBS	DROPPED CLUBS	NET GAIN/LOSS	QUARTER	NEW MEMBER GOAL	CHARTER AND NEW MEMBERS ADDED	DROPPED MEMBERS	NET GAIN/LOSS
JULY/AUG/SEPT	1	1	1	0	JULY/AUG/SEPT	25	116	193	-77
OCT/NOV/DEC	1	1	0	1	OCT/NOV/DEC	25	112	109	3
JAN/FEB/MAR	1	1	0	1	JAN/FEB/MAR	25	179	87	92
APR/MAY/JUNE	1	1	0	1	APR/MAY/JUNE	25	85	52	33

GOALS AND ACTUAL NEW CLUBS CUMULATIVE



GOALS AND ACTUAL MEMBERS CUMULATIVE



DROPPED CLUBS: 1	63 CLUBS OF 87 ADDED 1 OR MORE NEW MEMBERS	<u>GENDER DISTRIBUTION</u>	
<u>DROPPED MEMBERS</u>		MALE	1,544 (59.75%)
DECEASED	20	FEMALE	1,040 (40.25%)
CLUB CANCELLED	0	<u>FAMILY UNIT MEMBERS</u> 449	
OTHER	421	<u>HEAD OF HOUSEHOLD</u> 221	
TOTAL	441	<u>NON-HEAD OF HOUSEHOLD</u> 228	

[CLICK HERE FOR HEALTH ASSESSMENT DATA](#)